

Circuit Board Replacement Kit



Model: T600


This kit includes the necessary part to replace a defective circuit board.
 Kit installation is required by TennantTrue® service or an authorized Tennant service provider.

INSTALLATION INSTRUCTIONS:

Installation Time: 1 Hour
Special Tools Required: None

ATTENTION: After installing the new circuit board, it's recommended to update the machine with latest FIRMWARE to ensure machine operates at peak performance.

Kit Contents



Ref	Part No.	Description	Qty.
1	1229861	Circuit Board, Assy [T600, Cntrl]	1
2	27964	Strap, Ground, Static	1
3	1071235	USB Cable,	1

1. Park the machine on a level surface and remove key.
2. Disconnect battery cable connector from battery pack.

FOR SAFETY: Before servicing machine, stop on level surface, turn off machine, remove key and disconnect battery cables.

3. Install new circuit board (Refer to the parts diagram page on page 6). When handling the new circuit board, use the supplied static ground strap as instructed to protect the circuit board from damage (Figure 1).



Fig. 1

4. Reconnect battery cable connector to battery pack.
5. Check machine to ensure latest firmware is installed.

FIRMWARE UPDATE INSTRUCTIONS:

The Tennant Service Application Software is required to update the machine's FIRMWARE. See **TENNANT SERVICE APPLICATION SOFTWARE** on page 2.

NOTE: If the Service Application Software is currently installed on your computer, confirm or re-install the software to ensure latest software version is installed.

1. Start the Service Software Application program "Service Diagnostics..." (Figure 2). See Figure 8 for further information.



Shortcut Icon on Desktop

Fig. 2

2. After start up, the following screen will appear (Figure 3).

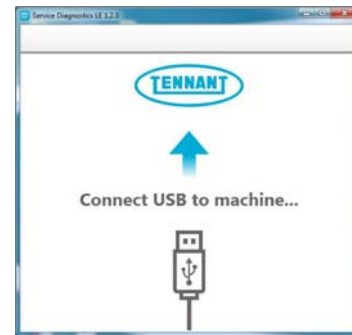


Fig. 3

3. Connect the USB cable, supplied with kit, to the computer and into the USB port on machine. Turn the key switch to the on position (Figure 4).

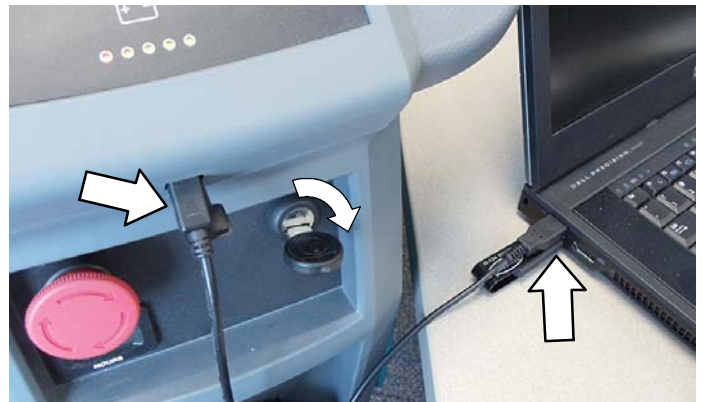


Fig. 4

- The application software will then connect to the machine (Figure 5). If the application remains on the “Connecting to Machine...” screen for an extended period, recycle key or close and restart the application software. If it still fails to connect, restart the computer.



Fig. 5

- If firmware updates are required, the “Firmware” button on the home screen will be highlighted in yellow as shown (Figure 6). Press the Firmware button to update the machine’s firmware.

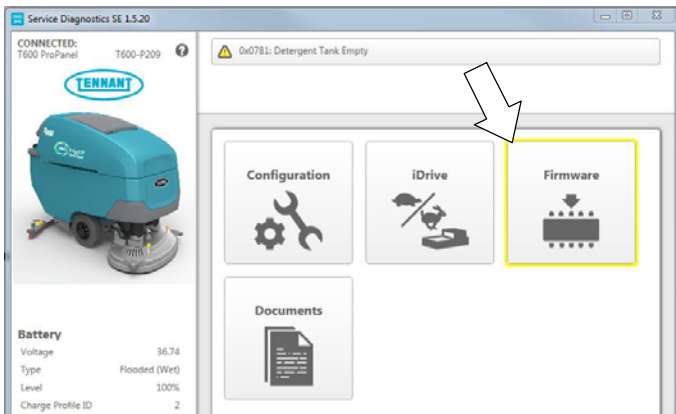


Fig. 6

Continue with the firmware update by pressing the yellow “Update” button as shown (Figure 7). It may take a few minutes to update.

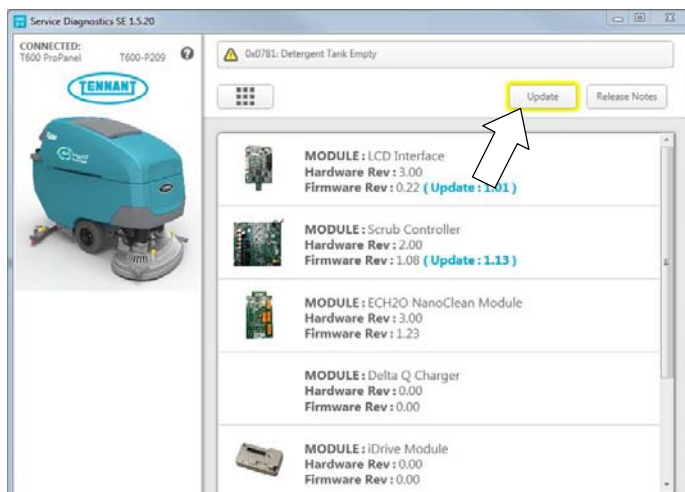


Fig. 7

- After the firmware updates are installed, cycle the key to apply the new firmware. Disconnect the USB cable.

TENNANT SERVICE APPLICATION SOFTWARE:

The Tennant service application software can be accessed or downloaded as described below.

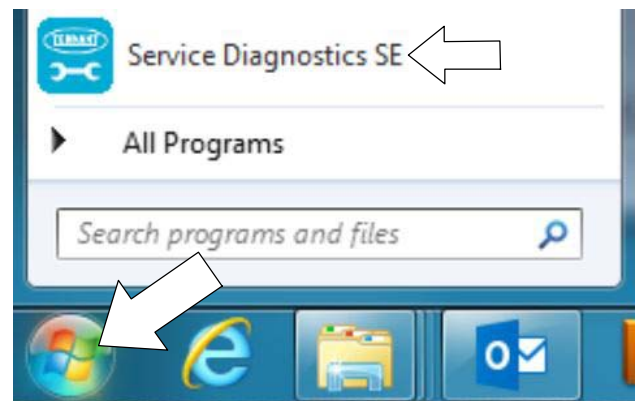
TennantTrue® Service personnel with ServiceLink computers:

The software is pre-installed on your computer as shown below. The software application is titled “Service Diagnostics” (Figure 8). ServiceLink computers have latest software version.

Shortcut Icon on Desktop



From Start menu



From Start menu > All Programs > Tennant Company > Tennant Service Diagnostics

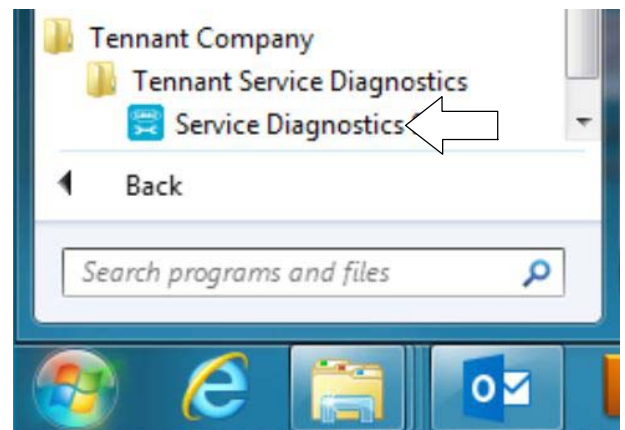


Fig. 8

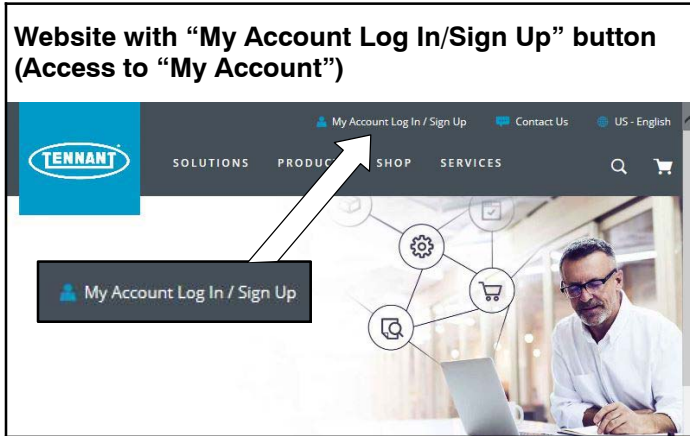
Authorized Tennant Service Providers:

The Service Application Software can be downloaded from the Tennant Public website as described below.

NOTE: If the Service Application Software is currently installed on your computer, confirm or re-install the software to ensure latest software version is installed.

To access the Service Application Software, go to www.tennantco.com. Depending on your geographical location, the website may have a “My Account Log In/Sign Up” button at the upper right or a “My Tennant Customer Sign In” tab at the upper right of the Tennant website as shown below (Figure 9).

Proceed with the software download instructions as described on the following pages.



OR



Fig. 9

Website with “My Account Log In/Sign Up” button:

1. Press “My Account Log In/Sign Up” to open or create an account (Figure 10).

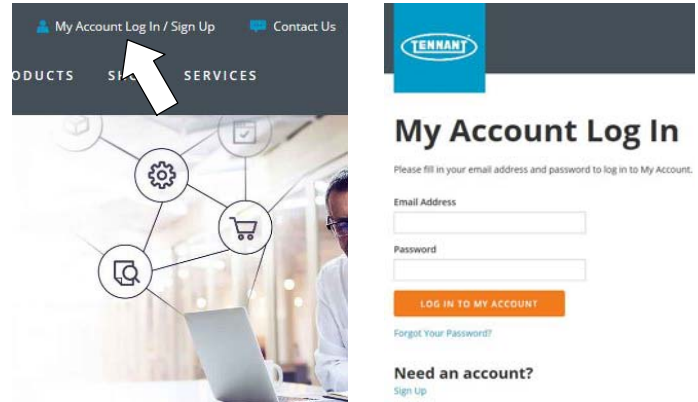


Fig. 10

2. Once logged in to the “My Account” website, click on the “INTERNAL RESOURCES” link as shown below (Figure 11).

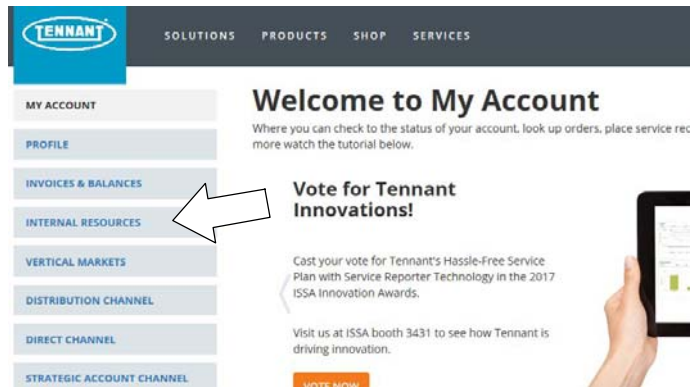
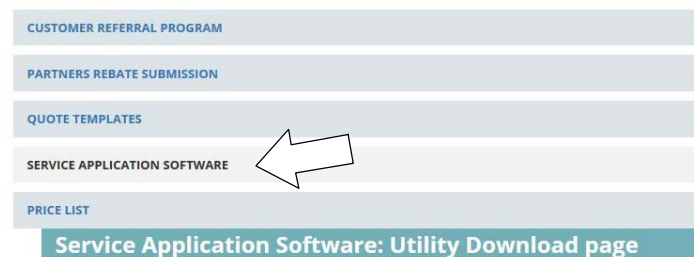


Fig. 11

3. Click on the “SERVICE APPLICATION SOFTWARE” link as shown below (Figure 12).



Supported Equipment

Tennant	Nobles	Alfa
<ul style="list-style-type: none"> • B5 • B7 • M17 	<ul style="list-style-type: none"> • SpeedGleam® 5 • Speedgleam® 7 • Speed Scrub® 300 	<ul style="list-style-type: none"> • A300 • A500

Fig. 12

4. Within the Service Application Software page, click on the link titled “**Service Diagnostics LE version x.x.xx**” (Figure 13).



Fig. 13

5. To download the service software continue to click as instructed then click the Save button (Figure 14).

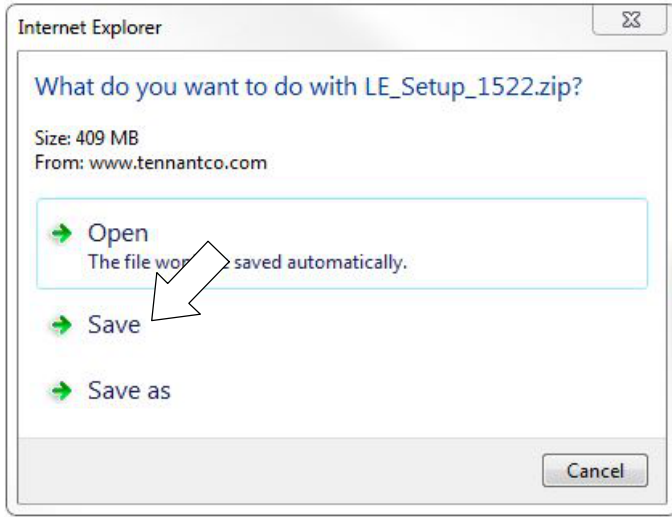


Fig. 14

6. Open the “Downloads” folder and locate the “LE_Setup_xxxx” zip file. Open the zip file and double click on the “LE_Setup_xxx” file to install the application software on your computer (Figure 19). Follow instructions on screen to install.



Fig. 15

7. After the service application software is installed on your computer, refer to figure 8 to access the program.

Website with “My Tennant Customer Sign in” tab:

1. Log in to the “My Tennant” website or register as a new user (Figure 16).

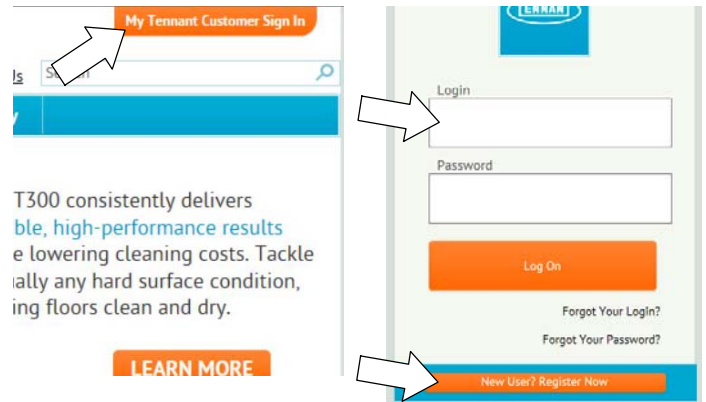


Fig. 16

2. Once logged on to the “My Tennant” website, click on the “**Service Application Software**” link under the “Product Support & Solution” section as shown below (Figure 17).



Fig. 17

3. Within the Service Application Software page, click on the link titled **“Service Diagnostics LE version x.x.xx”** to download the application installer then click the Save button (Figure 18).

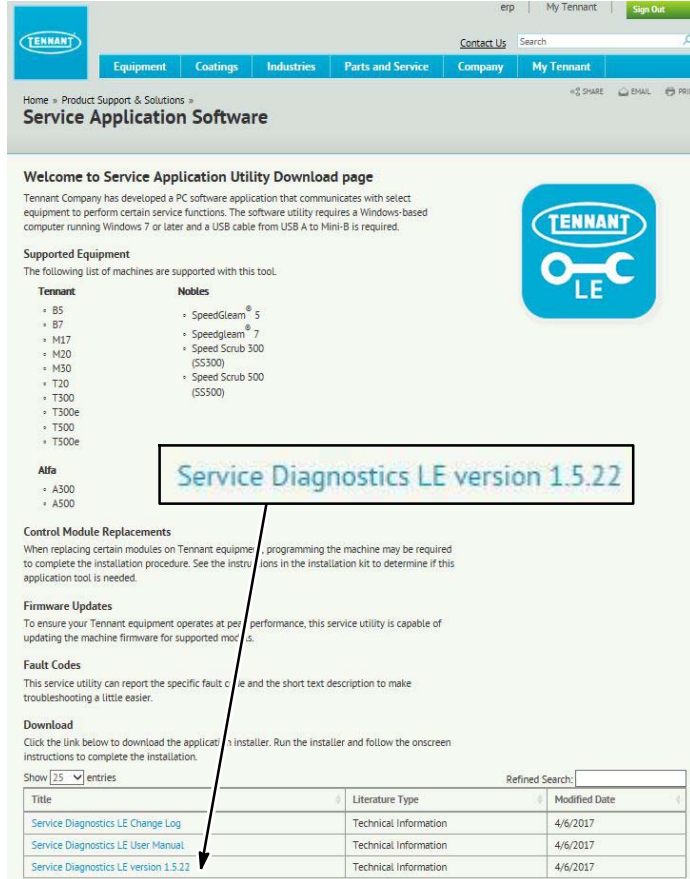


Fig. 18

4. Open the “Downloads” folder and locate the “LE_Setup_xxxx” zip file. Open the zip file and double click on the “LE_Setup_xxx” file to install the application software on your computer (Figure 19). Follow instructions on screen to install.

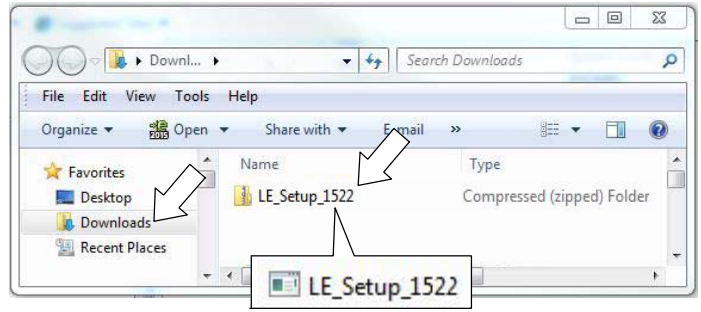
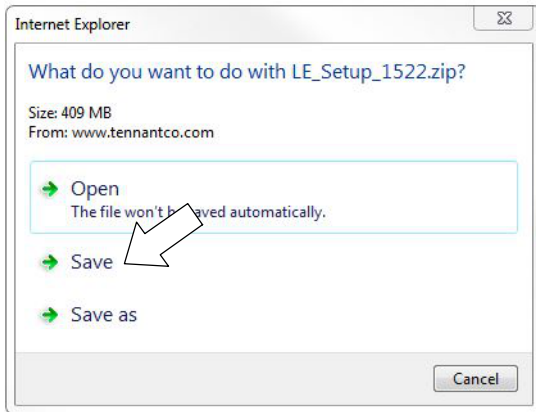
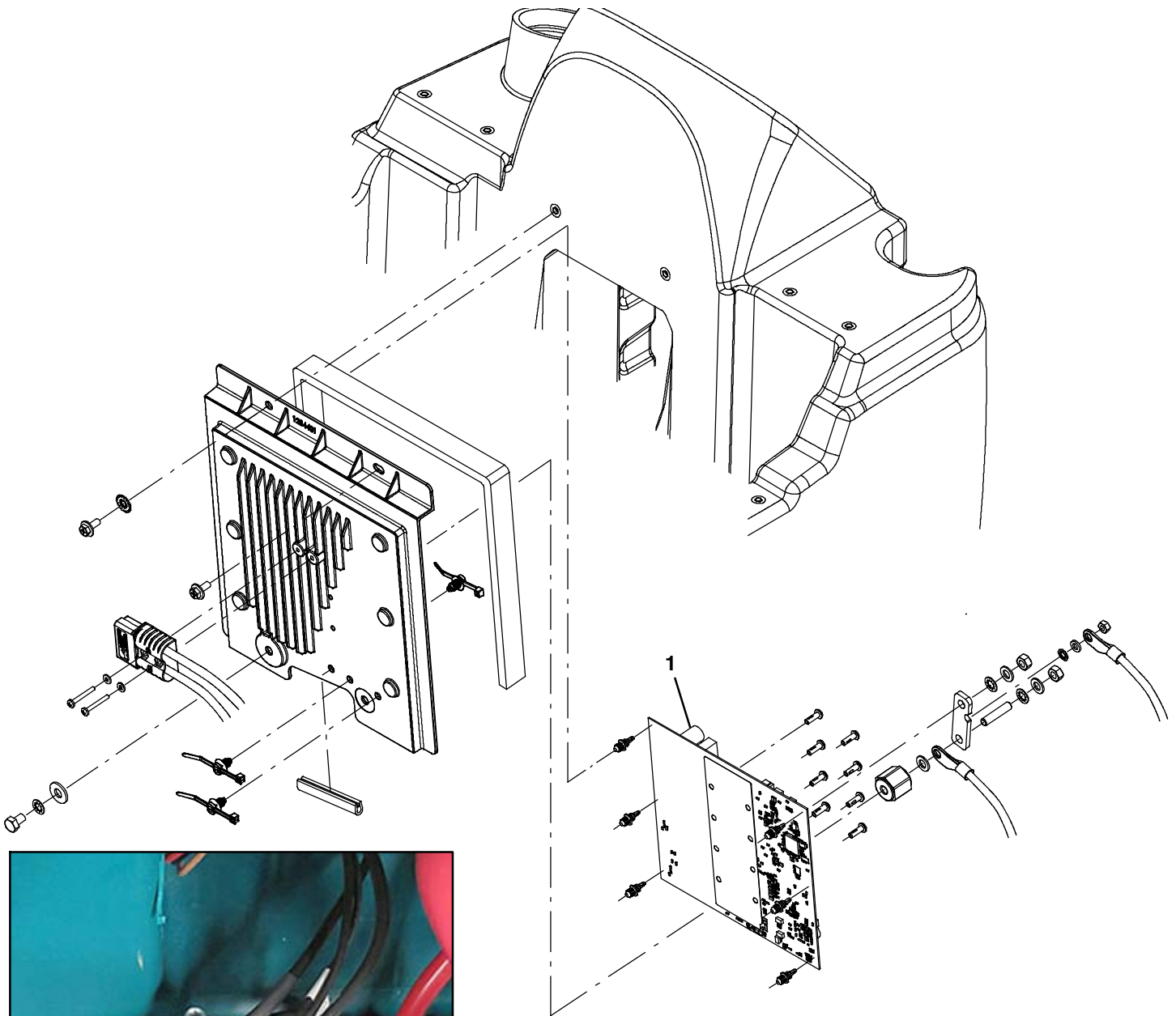


Fig. 19

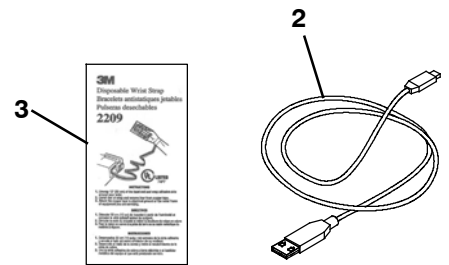
5. After the application software is installed on your computer, refer to figure 8 to access the program.



T600 Circuit Board Kit Parts List



9 Nm (6.6 lb-ft)



Ref.	Part No.	Description	Qty.
1	1229861	Circuit Board, Assy [T600, Cntrl]	1
2	1071235	Cable, USB	1
3	27964	Strap, Ground, Static	1